

DuraCoder® Brand Encoders

Heavy Duty Rotary Encoders

Originally designed for mill-duty applications and earth mining equipment, AMCI's DuraCoder® brand encoders provide maximum durability for applications that require superior strength. The non-contact sensor design is superior because it does not rely on sensitive optics or plastic gears.

The DuraCoder product line is offered in aluminum or stainless steel construction, and all versions are fully sealed to provide an IP67 rating. Solid shaft and hub shaft versions are available, and both types incorporate an oversized double row bearing that supports shaft loads up to 100 lbs. Radial/50 lbs Axial.

DuraCoder encoders are designed for long lasting, reliable performance.



Specifications at a Glance

- 2.5" diameter body (DC25 & NR25)
- 4.25" diameter body (DC425)
- Aluminum or Stainless Steel Versions
- Side or End Connectors
- 12 to 26.4Vdc
- -20°C to 85°C
- IP67

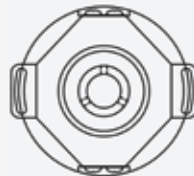
Mounting Options:



Flange Mount

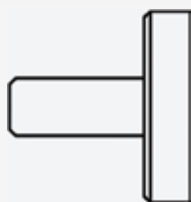


Servo Mount



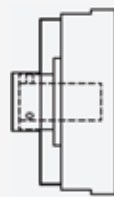
Hub Mount

Shaft Options:



Solid Shaft

Diameters:
1/4"
3/8"
5/8"
10mm



Hub Shaft

Inner Diameters:
3/8"
1/2"
10mm
12mm

► DuraCoder® Brand Encoders

NR25 EtherNet/IP	NR25 Modbus-TCP	NR25 Profibus-DP	DC25 DeviceNet
			
<p>Output Code: EtherNet/IP</p> <p>Resolution: Single-turn = 16 Bits Multi-turn = 30 Bits Max</p>	<p>Output Code: Modbus-TCP</p> <p>Resolution: Single-turn = 16 Bits Multi-turn = 30 Bits Max</p>	<p>Output Code: Profibus-DP</p> <p>Resolution: Single-turn = 16 Bits Multi-turn = 28 Bits</p>	<p>Output Code: Binary</p> <p>Resolution: Single-turn = 12 Bits</p>
DC25 Absolute SSI	DC25 Incremental Digital	DC25 Absolute Digital	DC25 Absolute Analog
			
<p>Output Code: Binary, Gray Code</p> <p>Resolution: Single-turn = 12 Bits Multi-turn = 24 Bits</p>	<p>Output Code: Quadrature with index</p> <p>Resolution: 4096 cycles/turn max</p>	<p>Output Code: Binary, Gray Code, BCD</p> <p>Resolution: Single-turn = 12 bits</p>	<p>Output Type: Current or Voltage</p> <p>Resolution: Single-turn = 12 bits</p>
DC425 Absolute Analog			
	<p>DuraCoder encoders are proudly manufactured at AMCI's headquarters in Terryville, CT USA. We research, design, and test these encoders with an exacting focus on quality. Through this integrated approach to product development we're able to bring the world's finest encoders to market.</p>		
<p>Output Type: Current or Voltage</p> <p>Resolution: Multi-turn = 16 Bits Max</p>	 <p>Visit our web site to learn about these and other quality AMCI products: www.amci.com</p>		

AMCI Corporate Headquarters

20 Gear Drive | Plymouth Industrial Park | Terryville, CT 06786
 Tel: 860-585-1254 | Fax: 860-584-1973 | Email: sales@amci.com