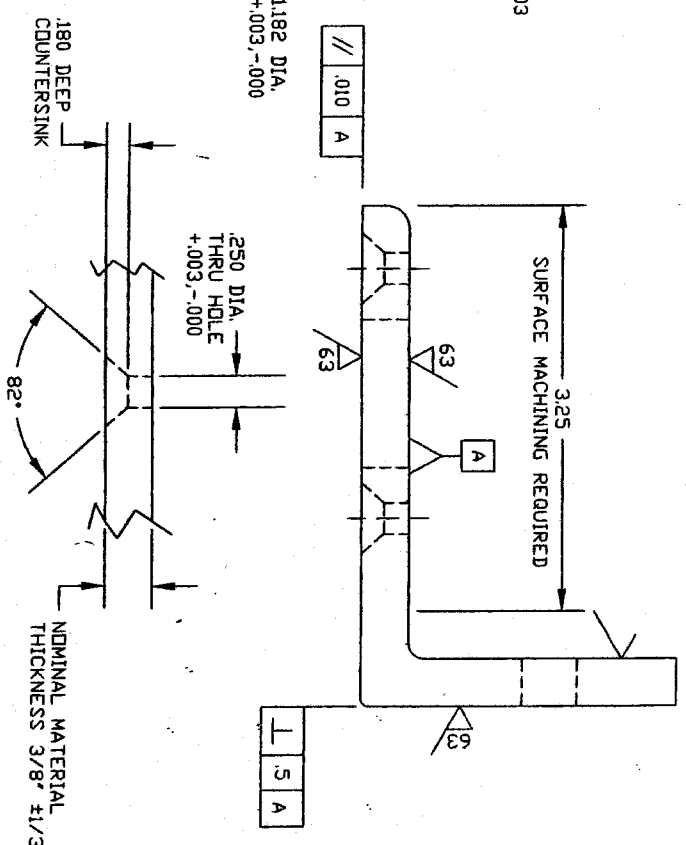


REVISIONS				
LTR	DESCRIPTION	ECN #	DATE	CHKD
-	RELEASE NEW DWG.		6/14/91	
A	COMPLETE REVISION			
C	ADDED PERP. AND ANG. SPECS.	441	2-17-94	



1/4 - 20 MOUNTING HOLE DETAIL

UNLESS OTHERWISE SPECIFIED DIMENSIONS ARE IN INCHES FRACTIONS DECIMALS ANGLES			
± 1/32	XX ± .02	XX ± .005	± 5°
MATERIAL	ALUM. ANGLE	AMERICAN STANDARD	6061-T6 4X4X3/8
FINISH	BLACK ANODIZED MIL 8625 TYPE 2	DD NOT SCALE DRAWING	
APPROVALS	DATE	DRAWN T.M.L. 2-94	
CHECKED		APVD	
NEXT ASSEMBLY		QTY PER	
DRAWING NO		SCALE 1 TO 1	
22115600C		SHEET 1 OF 1	
REV C		AMCI Part # TMB-1	

AMCI Part # TMB-1

ADVANCED MICRO CONTROLS, INC.
PLYMOUTH INDUSTRIAL PARK
TERRYVILLE, CT 06786

HT/HT TRANSDUCER MOUNTING BRACKET