

Linear Actuators

Paired with AMCI Integrated Motors

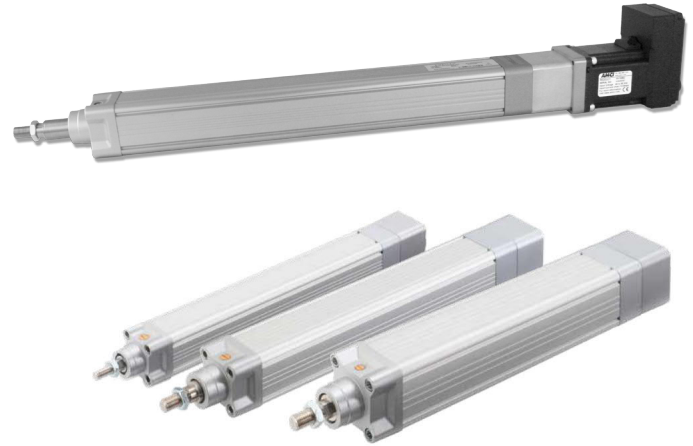
Transform your factory with AMCI's space-saving, energy-improving integrated motors paired with linear actuators that provide guaranteed compatibility.

Features:

- Built-in controller saves space
- Standard sizes (easy to replace pneumatics)
- High level of precision and repeatability
- Supports wide-ranging operations with longer strokes
- Payloads and speeds increase thanks to higher output
- Wide selection of options & accessories

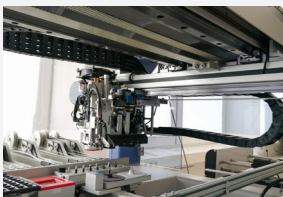
Benefits:

- Easy integration & fast assembly
- Lower energy costs
- 24/7 Service & support



Applications

Pick & Place



AMCI's energy efficient electric actuators offer reduced changeover times & operating costs, plus migration is easy with standard mounting.

Die Adjustment



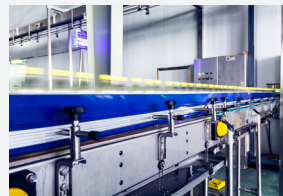
Benefit from a high level of precision and accuracy and the ability to constantly adjust the actuator, meeting process requirements.

Stacker Applications



When combined with AMCI's actuators, stepper motors provide an alternative solution to servo with all the move capabilities needed at a lower cost.

Edge Guide Adjustment

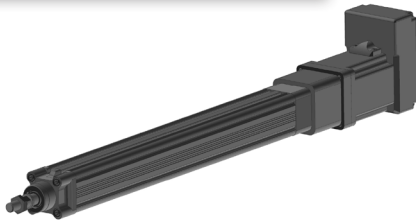


Take advantage of the PLC & change the entire set up with the push of a button - greatly reducing changeover time compared to manual adjustment.

Linear Actuators At-A-Glance

AMCI's Linear Actuator & Integrated Motor combination can be connected to a PLC via the network. Unlike other products that require a separate software package for configuration or operation, AMCI's PLC-based products are programmed using your PLC's software - nothing new to buy or learn!

L3 Series Actuator

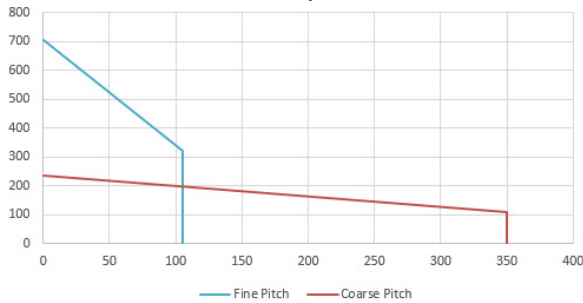


Input Voltage: 48 Vdc

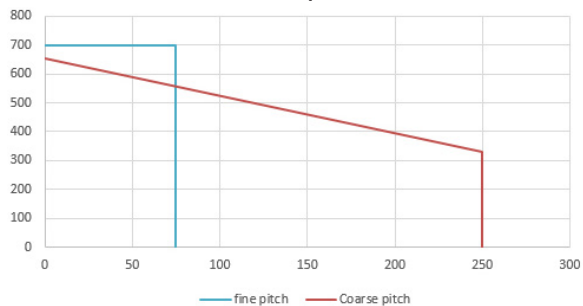
Actuator Pitch

Coarse Pitch: 10mm | Fine Pitch: 3mm

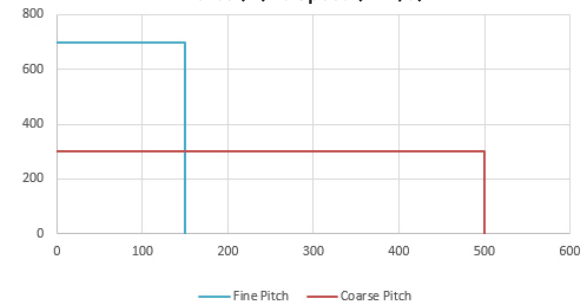
SMD17E2-80-L3
Force (N) vs Speed (mm/s)



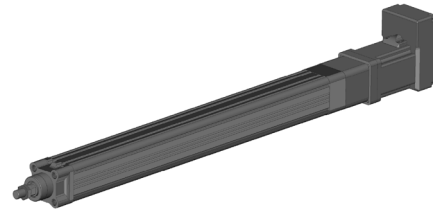
SMD23E2-240-L3
Force (N) vs Speed (mm/s)



SV160E2-L3
Force (N) vs Speed (mm/s)



L4 Series Actuator

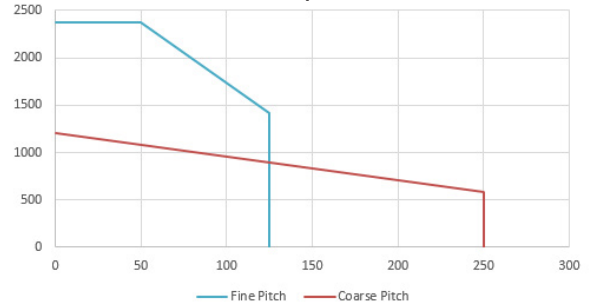


Input Voltage: 48 Vdc

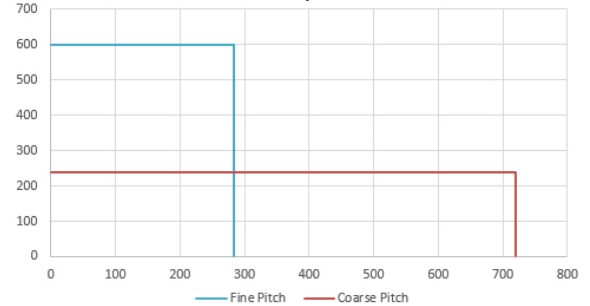
Actuator Pitch

Coarse Pitch: 12.7mm | Fine Pitch: 5mm

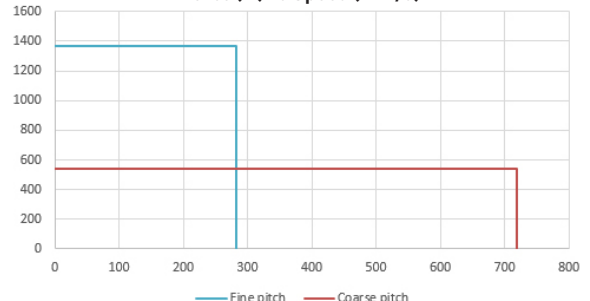
SMD34E2-450-L4
Force (N) vs Speed (mm/s)



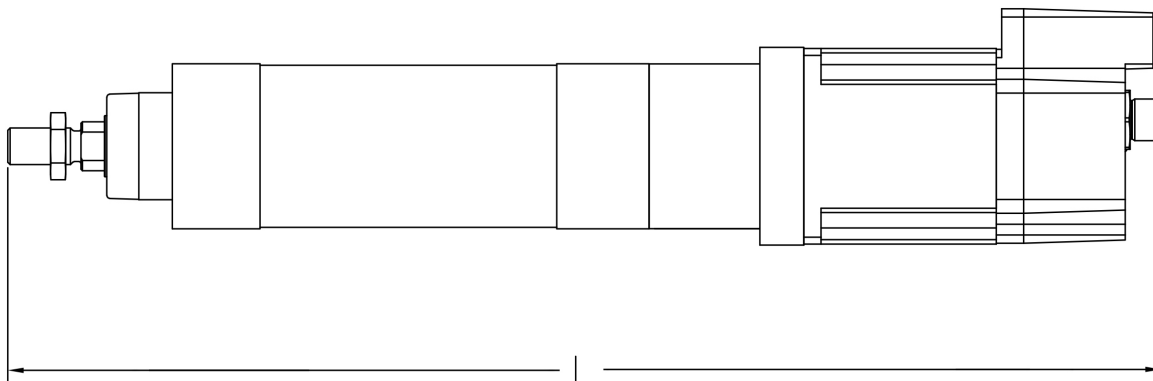
SV160E2-L4
Force (N) vs Speed (mm/s)



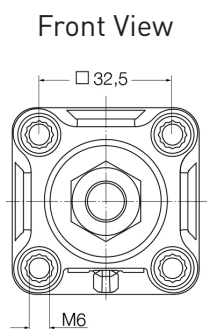
SV400E2-L4
Force (N) vs Speed (mm/s)



► Dimensional Drawing

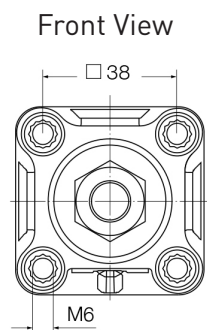


L3 Actuator Specifications



Stroke (mm)	Actuator + Motor Length Overall = L		
	SMD17E2 (mm)	SMD23E2 (mm)	SV160E2 (mm)
50	359.7	384.9	405.3
100	409.7	434.9	455.3
150	459.7	484.9	505.3
200	509.7	534.9	555.3
300	609.7	634.9	655.3
400	709.7	734.9	755.3

L4 Actuator Specifications



Stroke (mm)	Actuator + Motor Length Overall = L		
	SV160E2 (mm)	SV400E2 (mm)	SMD34E2 (mm)
100	485.8	515.8	489.7
200	585.8	615.8	589.7
300	685.8	715.8	689.7
400	785.8	815.8	789.7
600	985.8	1015.8	989.7

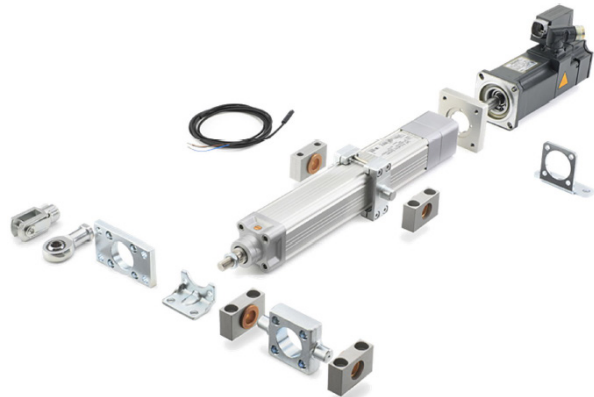
Linear Actuators

Delivering a Complete Solution

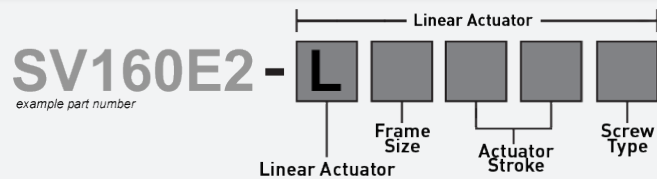
AMCI's selection of options & accessories simplify the ordering process and guarantee 100% compatibility.

Available Accessories:

- Mounting kits
- Trunions
- Swivel flanges
- Rod ends



Ordering Information



Part Number Character	Linear Actuator Part Number <i>(append to end of motor part number)</i>								
AMCI Integrated Motor	Append your linear actuator add-on part number to the end of an AMCI integrated motor part number. <table border="0"> <tr> <td><u>Available with L3 Actuator:</u> SMD17E2-80 - size 17 stepper SMD23E2-240 - size 23 stepper SV160E2 - 160 watt servo</td> <td><u>Available with L4 Actuator:</u> SMD34E2-450 - size 34 stepper SV160E2 - 160 watt servo SV400E2 - 400 watt servo</td> </tr> </table>	<u>Available with L3 Actuator:</u> SMD17E2-80 - size 17 stepper SMD23E2-240 - size 23 stepper SV160E2 - 160 watt servo	<u>Available with L4 Actuator:</u> SMD34E2-450 - size 34 stepper SV160E2 - 160 watt servo SV400E2 - 400 watt servo						
<u>Available with L3 Actuator:</u> SMD17E2-80 - size 17 stepper SMD23E2-240 - size 23 stepper SV160E2 - 160 watt servo	<u>Available with L4 Actuator:</u> SMD34E2-450 - size 34 stepper SV160E2 - 160 watt servo SV400E2 - 400 watt servo								
Linear Actuator	L = Linear actuator add-on								
Frame Size	3 = Size 32 frame 4 = Size 40 frame								
Stroke Length	<table border="0"> <tr> <td>05 = 50 mm stroke</td> <td>30 = 300 mm stroke</td> </tr> <tr> <td>10 = 100 mm stroke</td> <td>40 = 400 mm stroke</td> </tr> <tr> <td>15 = 150 mm stroke</td> <td>60 = 600 mm stroke</td> </tr> <tr> <td>20 = 200 mm stroke</td> <td></td> </tr> </table>	05 = 50 mm stroke	30 = 300 mm stroke	10 = 100 mm stroke	40 = 400 mm stroke	15 = 150 mm stroke	60 = 600 mm stroke	20 = 200 mm stroke	
05 = 50 mm stroke	30 = 300 mm stroke								
10 = 100 mm stroke	40 = 400 mm stroke								
15 = 150 mm stroke	60 = 600 mm stroke								
20 = 200 mm stroke									
Screw Type	C = Course pitch ball screw (10mm for 32 frame, 12.7mm for 40 frame) F = Fine pitch ball screw (3.0mm for 32 frame, 5.0mm for 40 frame)								